



**Birmingham
Community Healthcare**
NHS Foundation Trust

BCHC Speech and Language Therapy Service

School-Age Coordinators

1st October 2024



*Best Care
Healthy Communities*



Agenda...

1. School Age Pathway
2. A day in the life of a Link Speech and Language Therapist (SaLT)
3. Linking with the Ordinarily Available Provision guidance
4. Offer for schools awaiting a Link SaLT



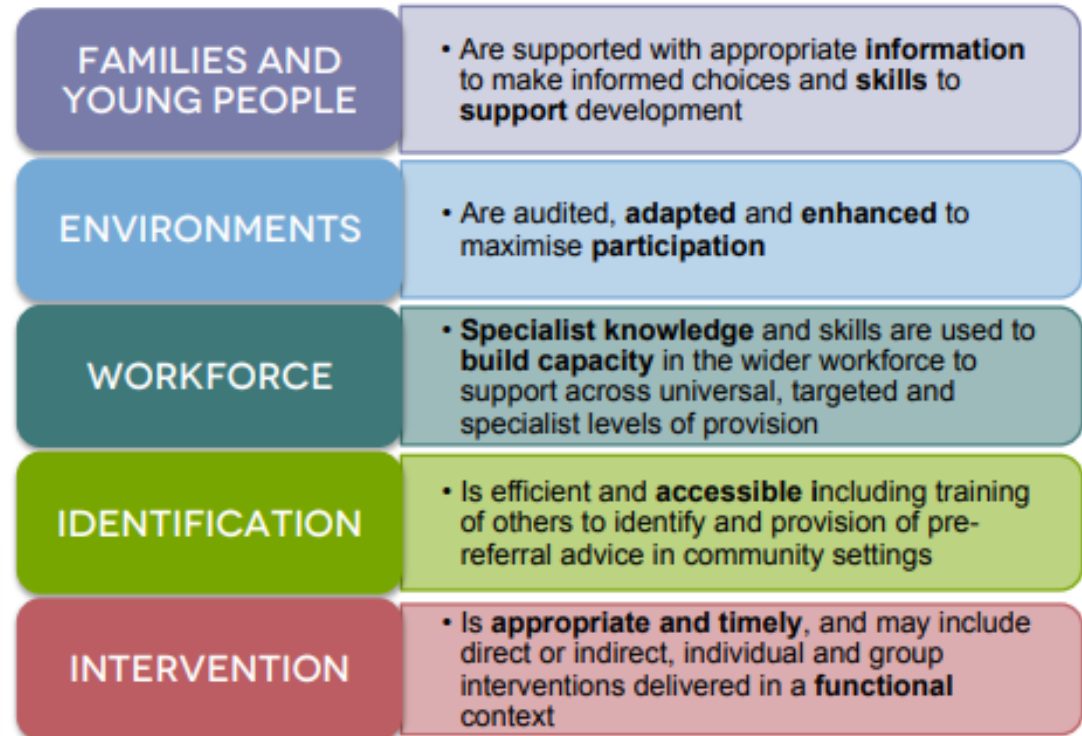
*Best Care
Healthy Communities*

School Age Pathway - Context

Support schools across 3 levels...



in 5 strands of support...



Best Care
Healthy Communities

School Age Pathway - Context

...to ensure positive speech, language, and communication outcomes for the children and families of Birmingham.

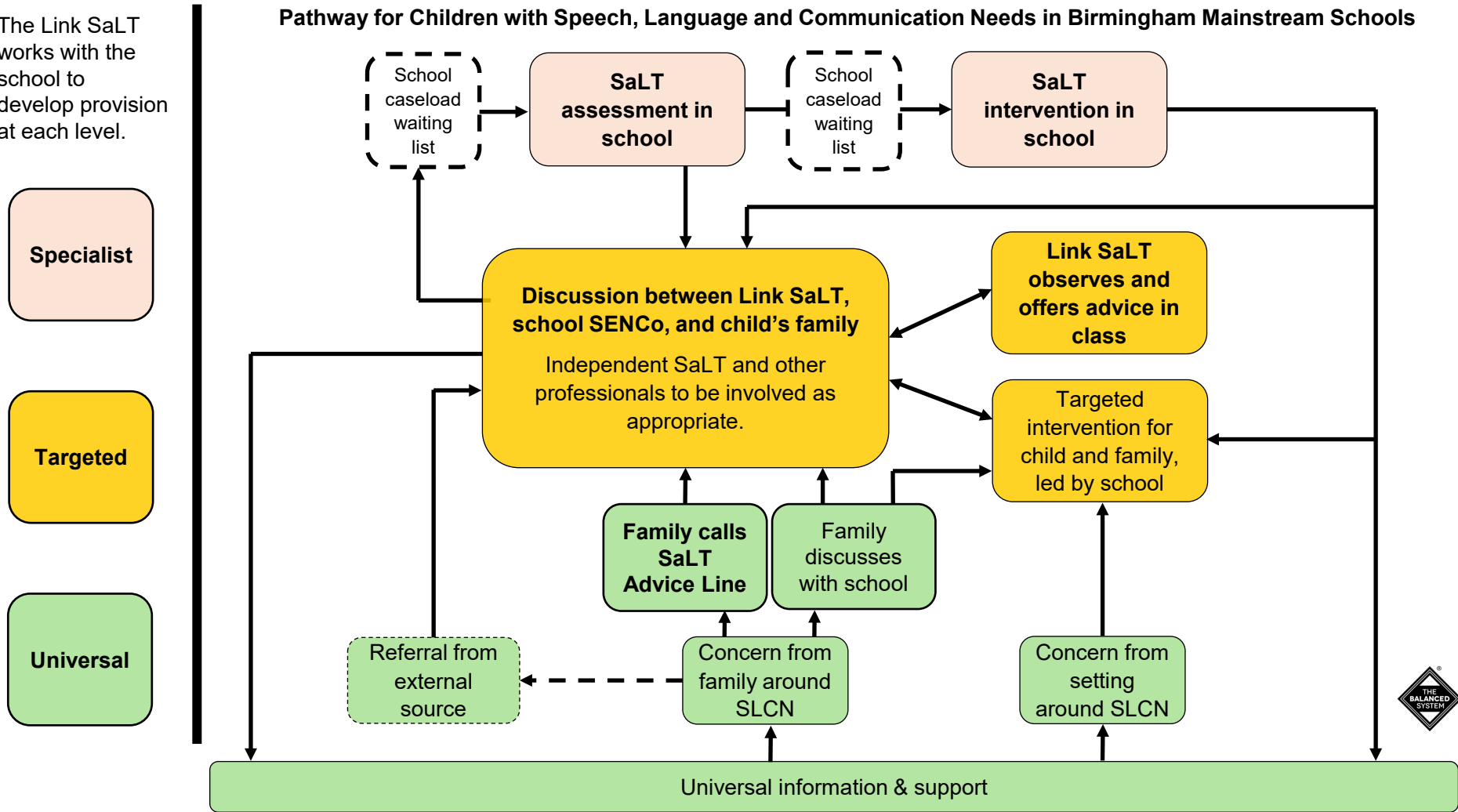


*Best Care
Healthy Communities*

School Age Pathway

The Link SaLT works with the school to develop provision at each level.

Pathway for Children with Speech, Language and Communication Needs in Birmingham Mainstream Schools



A Day in the Life of a Link SaLT...

Specialist support e.g

- Assessment
- Therapy

Includes:

- Liaison with parents/carers and school staff
- Clinical note writing
- Report writing
- Planning
- Collation and preparation of resources, plus demonstration



*Best Care
Healthy Communities*

A day in the life of a Link SaLT...

Targeted support e.g.

- Supporting school to set up targeted intervention groups
- Drop ins for teachers
- Observations and advice for teachers
- Parent/carer coffee mornings
- Training for school staff

Includes e.g.:

- Planning
- Collating and preparing resources
- Updating records



*Best Care
Healthy Communities*



A Day in the Life of a Link SaLT...

Universal support e.g.

- Advice around classroom strategies
- Parent/carer coffee mornings/workshops
- Training for school staff

Includes e.g.:

- Planning
- Collating and preparing resources
- Updating records



*Best Care
Healthy Communities*



SaLT Support for School to Deliver Ordinarily Available Provision:

Creating an Enabling Learning Environment e.g.

- Communication Friendly Settings

Speech, Language and Communication Needs e.g.

- Training, advice and resources for class teachers to support identification
- Supporting schools to screen for SLCN and to monitor the impact of SLCN.
- Supporting teachers to use strategies within classrooms



*Best Care
Healthy Communities*



SaLT Support for School to Deliver Ordinarily Available Provision:

Identified Barrier and/or Need: Speech Production e.g.

- Advice around the communication environment
- Set up and model targeted group support
- Staff training
- Specialist assessment and therapy



*Best Care
Healthy Communities*



Offer for schools awaiting a Link SaLT:

1. A Speech and Language Therapist will attend 1 **multi-agency planning (MAP)** meeting per academic year.
2. SENCOs can request a **30 minute virtual advice meeting per term** with a Speech and Language Therapist to support with developing universal and targeted provision and to discuss children on the SaLT waiting list.
3. SENCOs can **e-mail the locality SACo** with general queries.
4. SENCOs, school staff and parents/carers can contact the **SaLT advice line** to talk to a Speech and Language Therapist for advice. 0121 466 6231



*Best Care
Healthy Communities*



Offer for schools awaiting a Link SaLT:

5. Children can be referred to SaLT by completing the **Mainstream Schools Consent Form** and e-mailing it to the locality school age coordinator.
6. Children will be added to a waiting list to be seen for an **assessment in clinic** during the school holidays, whilst the school remains unallocated.
7. Children will be seen for an assessment to contribute to **Education, Health and Care Needs Assessment Requests.**



*Best Care
Healthy Communities*



Frequently Asked Questions

- Why has my school's Link SaLT changed?
- Why is my school's Link SaLT offer different this year?
- Why is my school's offer different to another school?
- How many children should a Link SaLT see in a day?
- My school doesn't have a Link SaLT yet – when will we have one?



ANY QUESTIONS?



*Best Care
Healthy Communities*